



Workbridge Activity Pack

Issue 6: Summer Party (2)

- Welcome to another sunny summer activity pack, made by Workbridge.
- Keep smiling and stay safe!

Please send videos and pictures of your completed activities to:
workbridge@standrew.co.uk

Inside this pack you will find:

1. Make an upcycled hanging basket - *made by Pieter*
2. Puzzles - *made by Kerry*
3. Colouring in sheets:
 - a. Workbridge 40th anniversary - *made by Donna*
4. Cut out Wellbeing Spinner - *made by Q Space*
5. Wordsearch
 - a. Find colleagues names - *made by Dawn*
 - b. Workbridge tools and equipment - *made by Dawn*
6. Northampton Quiz (Up the Cobblers... Wembley!) - *made by Dawn and Lisa*
7. Insect Week: Ladybird pebble painting - *made by Lisa*
8. Bake a delicious Victoria Sponge - *made by Jane*

Upcycled Hanging Baskets

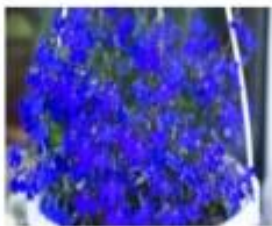
1) Choose a basket and liner

Below are some ideas of unwanted items you can recycle and use as a basket instead of throwing it away. It could be a colander, guitar, shoe holders or shoes/ crocs. Think about if there is drainage for water with whatever you choose.



2) Select your plants

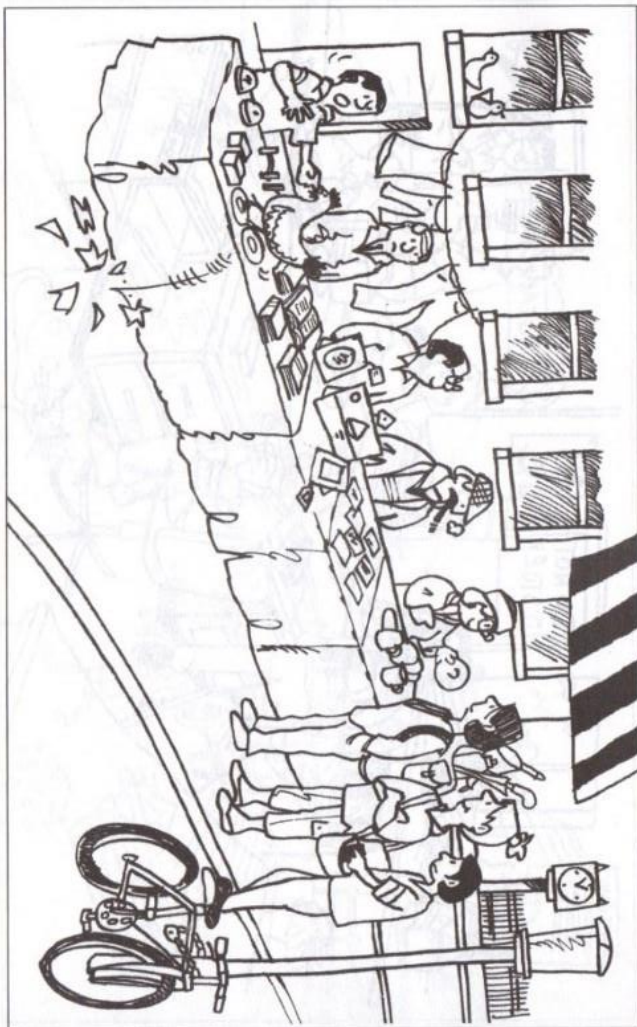
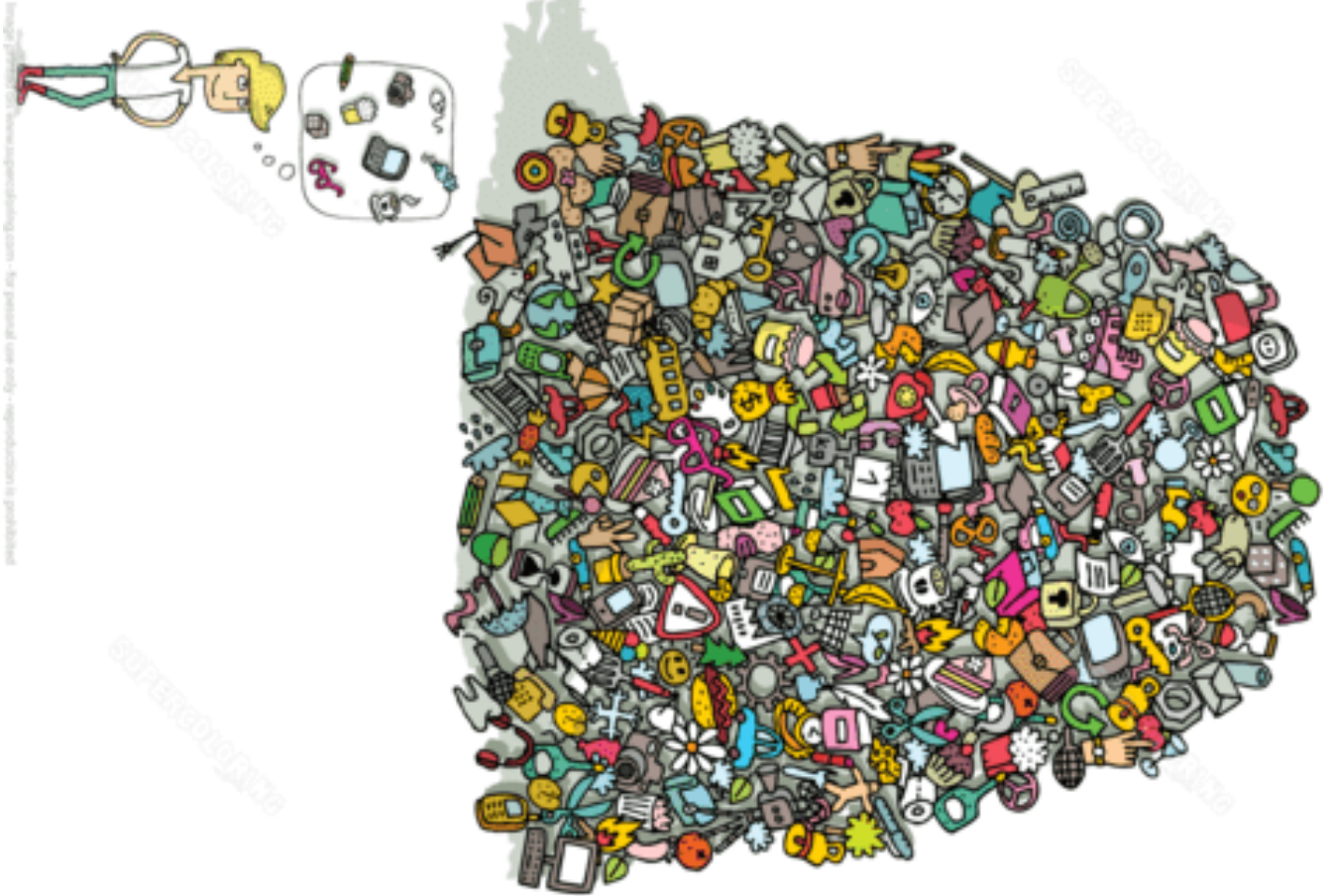
You can still buy small/ plug plants to put in your basket. Ideal choices may be geraniums, petunias, lobelia, verbena or fuchsias. For a longer lasting basket choose Hostas, Ivy, Heucheras or Ajuga.



3) Fill with compost.

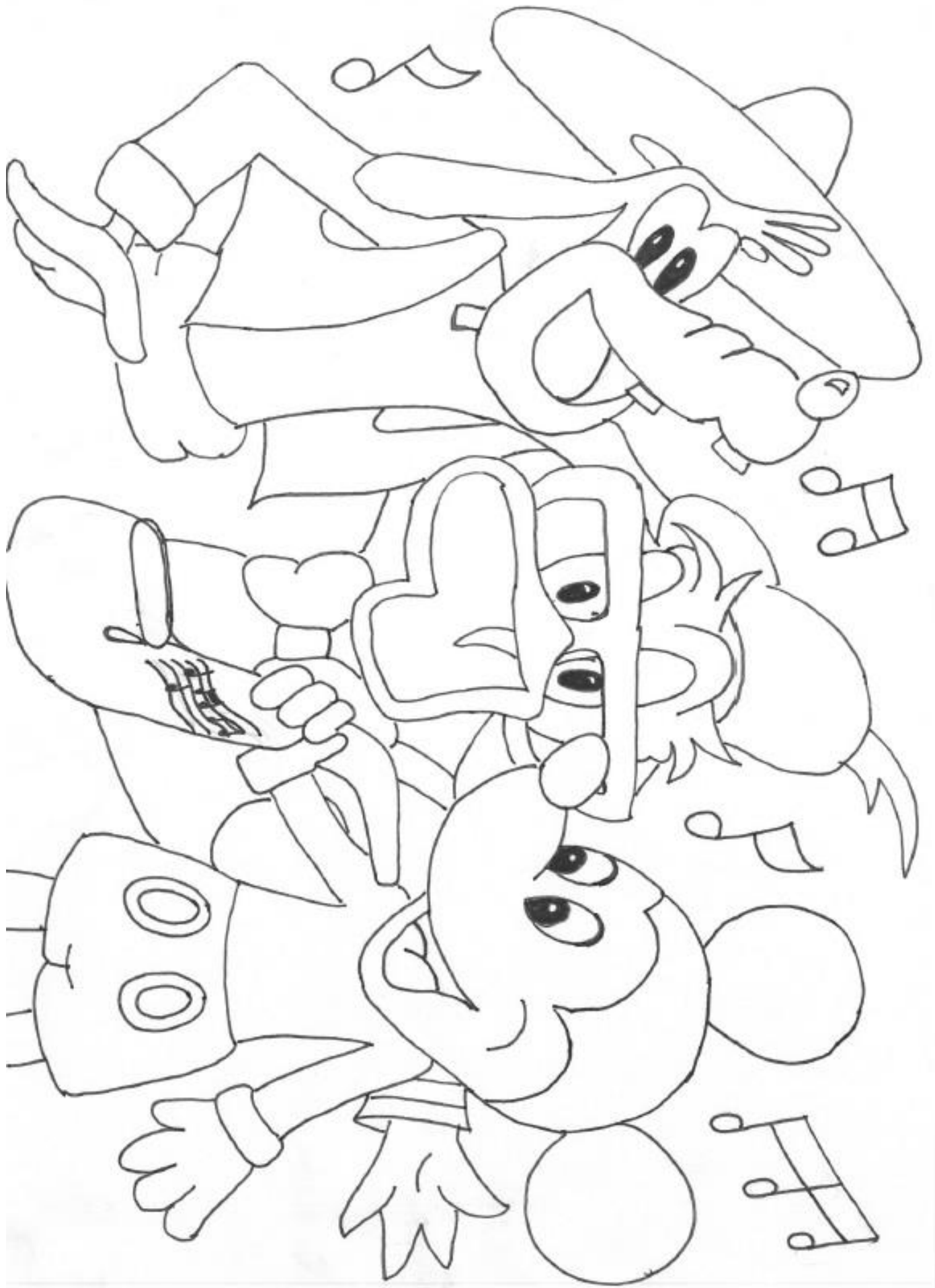
Make sure you keep the compost moist, especially when the weather is dry.

Puzzles:



Colouring Sheets:





I am bored!



Cut out our spinner, put a short pencil through the middle.

Wordsearches

Find Workbridge colleagues:

N	E	S	H	E	N	T	Y	H	A	R	V	E	Y	HELEN
R	N	I	E	A	E	B	N	B	E	H	K	E	N	NATALIE
E	A	R	L	A	E	E	E	E	D	A	V	I	D	BECKY
R	L	H	E	R	E	C	E	Y	M	A	D	A	Y	DAWN
N	E	C	N	B	K	C	A	R	M	E	N	C	C	ALEX
P	A	I	N	Y	R	A	A	H	V	A	J	R	A	CARMEN
A	H	K	L	E	A	E	T	N	R	D	A	A	R	DAVID
U	C	C	C	A	J	C	X	B	N	R	L	C	T	TERRY
L	H	A	E	A	T	R	N	H	A	A	E	H	D	ANNA
E	T	E	N	I	P	A	K	I	N	N	X	A	R	JANIE
B	E	I	L	N	H	S	N	M	N	B	W	E	H	BEN
E	E	E	N	N	A	E	L	C	E	N	A	L	A	CHRIS
N	A	T	E	R	R	Y	K	A	T	E	E	E	A	LEANNE
A	W	X	I	E	E	Y	A	A	E	A	P	H	E	TRACY
														HARVEY
														PAUL
														RACHAEL
														ADAM
														KATE
														BECCA

j d m
 e b j a b c q a f
 v m m s n n b l k u d l p
 o r f x s r u m x v a o x x o p o
 z x q s b a d e o t u i r h y x w s t
 q h e n u q w h a v m a m u l i o s e t k
 f a y o r j c k i n i u q e s h n l m r j
 e l d e e n h y n r l t m y a m c
 n f f y x w p o g n d s i m j w m
 j l o k q q y m a t e r i a l w u a g j a d k e d
 r e t n i r p e w q o l c o t c e w p a c x l d j
 a d p w y o s d i s h r u b g q w r q y h b o q r
 n c f i h a m m e r w c y l p a f l d c n i c d e w s
 z j x x c l e s i h c l a m i n a t o r s n y s l e d
 l l t d o f v e b k s s x l q n y k m a w e r s w v c
 t m o m y e s b p a i n t w i o b h p b i y v
 l n q p h m p g e f r e e z e r q n r s l
 o z y u z a s z s i z z k t k t g n l a g
 e i t p h d d q i g
 q s e x o b z r i a h c
 e r k c l a y w m e f x j e n l s b g q s
 p l a n t q o i z s f w n a n o b b i r y
 m h b i o s a o v e n l q n p j y c b
 j k d s l l e m w q l w d e s k y
 e g k c f v w z n w x g w
 a v q e g d i r f
 w t o

SHRUB
 OVEN
 FRIDGE
 SEQUIN
 RIBBON
 SEWING
 MACHINE
 SCREWDRIVER
 SINK

CHISEL
 HAMMER
 WOOD
 POT
 FLOWER
 FREEZER
 PRINTER
 MATERIAL
 CLAY

SOIL
 PLANT
 PAINT
 COMPUTER
 DESK
 CHAIR
 GLAZE
 MOUSE
 SAW



**Celebrate the Cobblers at Wembley
with this Northampton quiz!**

- 1. What is the nickname of Northampton Town Football Club?**
A. The Sandals B. The Cobblers C. The Shoelaces
- 2. What is the Nickname of Northampton's Premiership Rugby Club?**
A. The Sinners B. The Angels C. The Saints
- 3. What is the name of Northampton's very own Cricket Club?**
A. Northamptonshire County Cricket Club
B. Northamptonshire Kings Cricket Club
C. Northamptonshire Queens Cricket Club
- 4. What year were Northampton Town Football Club founded?**
A. 1877 B. 1887 C. 1897
- 5. Who are Northampton Town Football Club's main rivals?**
A. Peterborough United B. Watford C. Leicester
- 6. Who was Northampton Town Football Club's first professional player?**
A. Peter (Fence) Jones B. Frank (Wall) Howard C. Gary (Gate) Smith
- 7. History was created in 1932 when brothers Fred and Albert Dawes scored how many goals against Newport County?**
A. 7 B. 6 C. 8
- 8. When were Northampton Town Football Club crowned Southern League champions?**
A. 1908 - 1909 B. 1918 - 1919 C. 1928 - 1929
- 9. What product or Industry is Northampton very famous for making?**
A. Cricket bats B. Fine leather shoes C. Rugby balls
- 10. What is the name of the famous Brewery Factory in Northampton?**
A. Carlsberg B. Budweiser C. Becks

- 11. There is an Aviary in Abington Park close to the museum; what type of animal would you find in an Aviary?**
- A. Monkeys B. Birds C. Fish
- 12. What is the name of Northampton's very own Theatre?**
- A. Queen & Westgate B. Northampton Filmhouse C. Royal & Derngate
- 13. What is the name of a very famous historical landmark in Northampton?**
- A. Queen Eleanor Cross B. Queen Elizabeth Cross C. Prince Charles Cross
- 14. What is NOT a name of a local Northampton Radio Station?**
- A. Radio Northampton B. Heart FM C. Radio 2
- 15. What is the name of Northampton's famous Ice Cream Maker?**
- A. Giovannis B. Gallones C. Angelinos

No peaking at the answers until the end...

- The answers**
1. B. The Cobblers
 2. C. The Saints
 3. A. Northamptonshire County Cricket Club
 4. C. 1897
 5. A. Peterborough United
 6. B. Frank (Wall) Howard
 7. C. 8
 8. A. 1908 - 1909
 9. B. Fine leather shoes
 10. A. Carlsberg
 11. B. Birds
 12. C. Royal & Derngate
 13. A. Queen Eleanor Cross
 14. C. Radio 2
 15. B. Gallones

Ladybird Pebble Painting:



1. Find a selection of different shaped flat smooth pebbles in your garden.
2. Place pebbles in a container and wash in warm water.
3. Dry off your pebbles with a paper towel or cloth.
4. Put a selection of poster paints into a paint pallet, I used a variety of red, green blue, yellow, black, white, gold, silver. You can use whatever colour you like.
5. Apply your first base coat of paint to each pebble using a selection of colours for each bug or creature, I used red or black for ladybirds.
6. Allow first base coat to completely dry, for best results apply a second coat for coverage so you cannot see the stone through the paint.
7. To make a ladybird draw a line across the pebble end to make a head. Draw two circles for each eye, a line down the middle for wings and draw circles either side for the ladybird spots.
8. Paint around the outlines of your pencil drawings in black paint to define the patterns and detail and once dry fill in and paint.
9. Paint two white circles at one end for eyes.
10. Once the whites of the eyes on your bug are dry you can experiment with painting different colour pupils for the eyes. I used black or red in the centre to make the eyes stand out. I use white paint for the finer detail for the eyes and antennas or whiskers.

Bake a delicious Victoria Sponge Cake

Summer Celebration 'Victoria Sandwich' cake



Ingredients
225g or 8oz
margarine or
butter
225g or 8oz
caster sugar
4 eggs (free
range)
225g or 8oz
self-raising
flour
1 tsp baking
powder

Recipe

- 1) Carefully cut out 2 circles of grease proof paper to fit in the bottom of your tins. Next grease your tins before placing the paper into the base of them. Now turn on your oven to either 180c/160c fan/gas mark 4.
- 2) Put the margarine and sugar into a large bowl and using a wooden spoon cream together (you can use an electric mixer if you're lucky enough to have one)
- 3) Carefully break the eggs and put them into your bowl. Beat 'stir hard' the eggs into the sugar and margarine, until smooth.
- 4) Now add your flour and baking powder and fold 'gently stir' it in until smooth
- 5) Divide the mixture as evenly as you can between the two tins and put onto the middle shelf of the oven. Leave to bake for 25 minutes.
- 6) The cakes should be bouncy to the touch and light brown in colour, when cooked. Take them out using oven gloves and place on a suitable surface for 5 minutes before transferring to a cooling rack.
- 7) To assemble place one cake upside down on a plate before adding a thick layer of your favourite Ruby 'raspberry or strawberry' jam. Place the second cake on top and then sprinkle with icing or caster sugar.

